



**Komplete**  
MODULAR SOLUTIONS

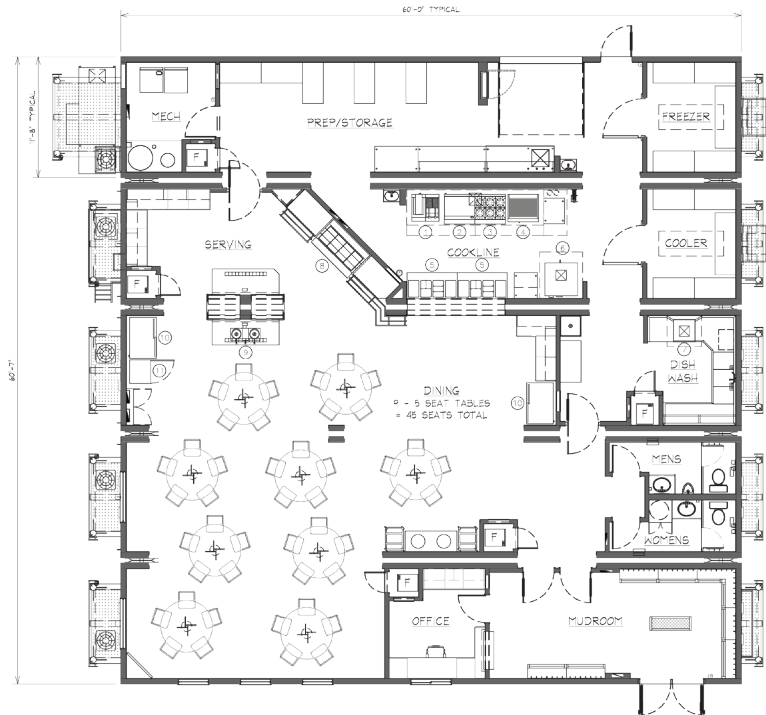
FieldREADY™

**5-unit**

// Kitchen-Diner

60'-7" x 60'-0"

5-unit Skidded Kitchen-Diner



## Highlights

### This Structure Contains:

- Industrial grade appliances
- Well-lit open concept seating
- Accessible food pick-up area
- Walk-in cooler & freezers
- Heavy duty loading dock area with overhead garage door
- Oversized windows
- Male & female washrooms
- Bootroom/mudroom area
- Premium laundry area
- Large dishpit area
- Large Camp Manager's office (or commissary)
- Quick connect utility harnesses
- Heavy duty skids for ease of transport and installation



**Komplete**  
MODULAR SOLUTIONS

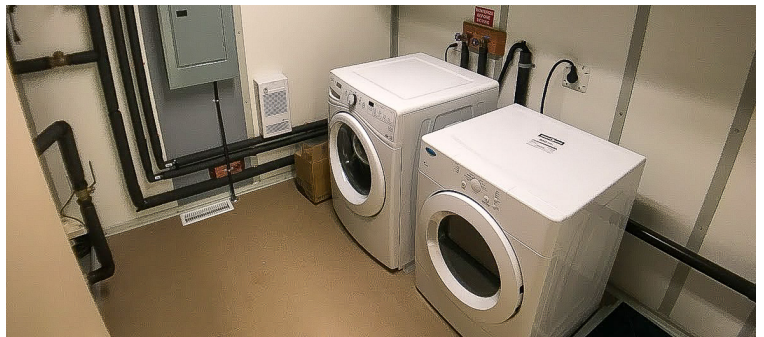
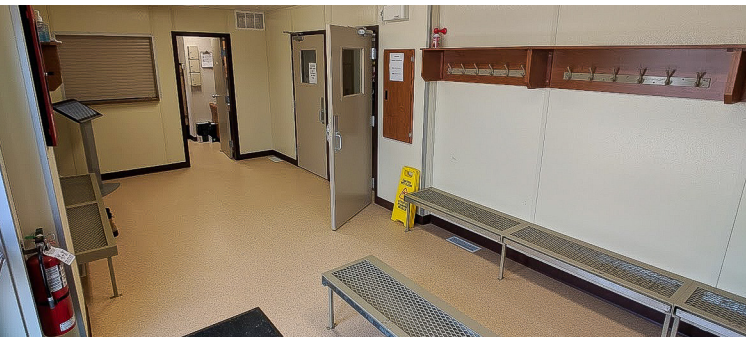
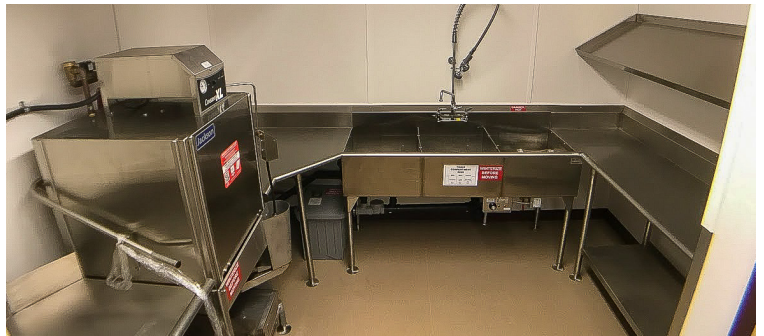
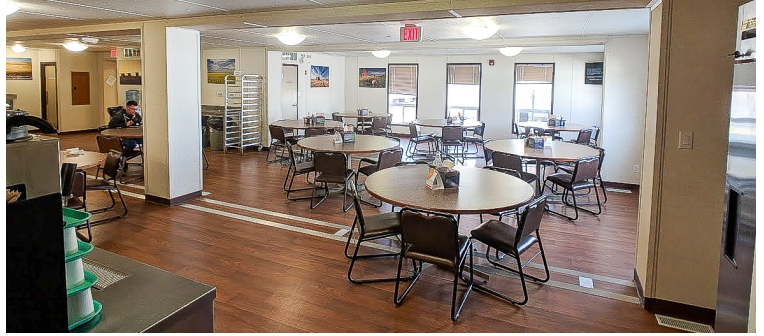
FieldREADY™

**5-unit**

// Kitchen-Diner

60'-7" x 60'-0"

5-unit Skidded Kitchen-Diner



OPEN CONCEPT SEATING | HOT SERVING LANES | UPGRADED FINISHES | CLIMATE CONTROLLED

[www.komplete.ca](http://www.komplete.ca)